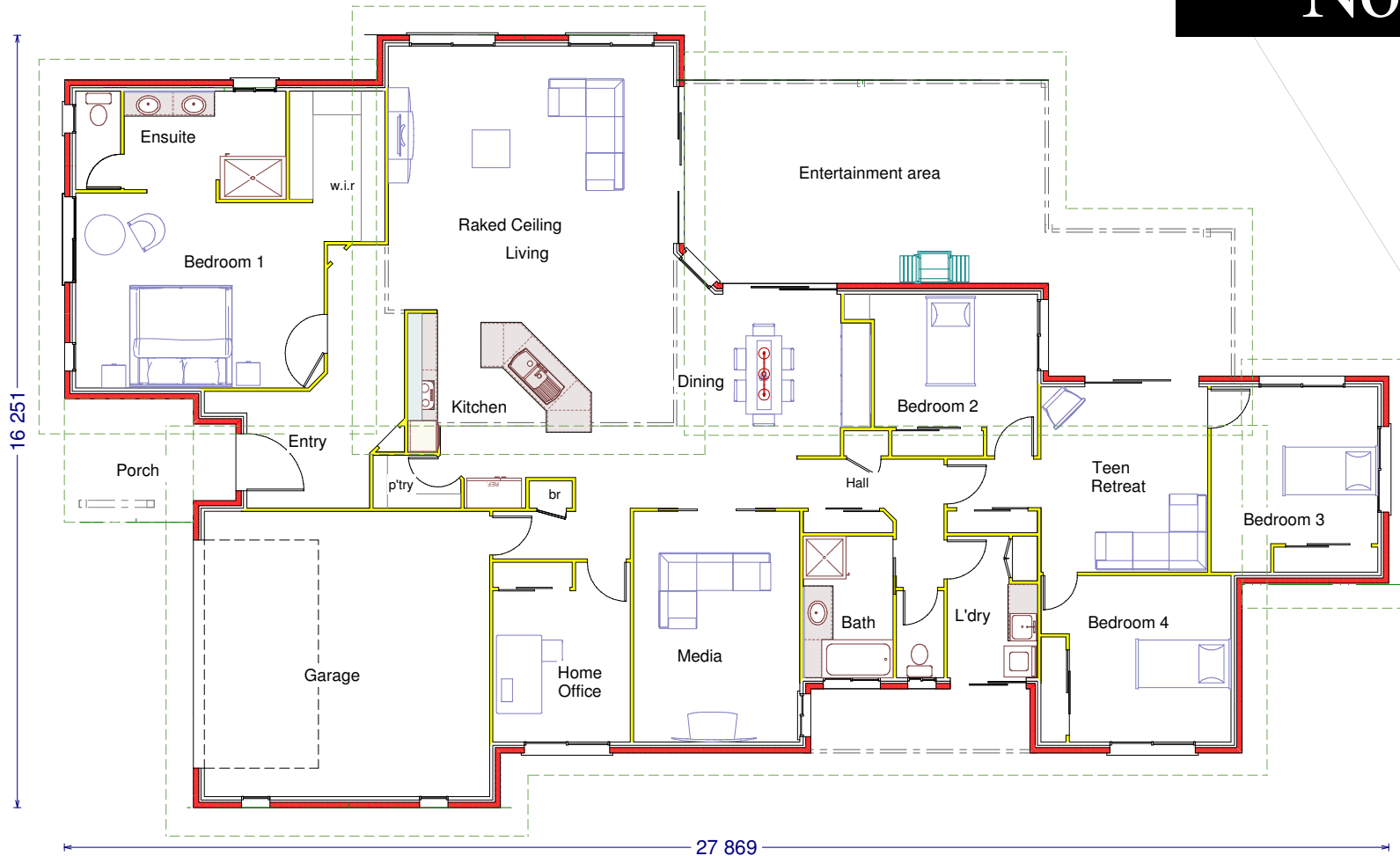




# Noosa 348



- \* 4 Bedroom
- \* 2 Bathroom
- \* Home Office
- \* Teen Retreat
- \* Computer Nook
- \* Media Room
- \* Open plan Living
- \* Large Patio
- \* Double Garage

Living Area: 288.1m<sup>2</sup>

Patio Area: 46.78m<sup>2</sup>

Entry Porch: 7.35m<sup>2</sup>

Porch Area: 6.7m<sup>2</sup>

Grand Total. 348.93m<sup>2</sup>